

FOUR SEASONS AT STEAMBOAT CONDOMINIUMS, PHASE II

SUPPLEMENTAL MAP-AIRSPACE UNITS 219-230

LOCATED IN LOTS 2 & 3, BLOCK 7 OF SKI TRAIL SUBDIVISION FILING NO 1, ALL OF T6N, R84W, OF THE 6TH P.M., CITY OF STEAMBOAT SPRINGS, ROUTT COUNTY, COLORADO

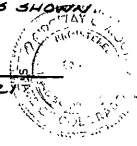
SHEET 1 OF 6

SURVEYORS CERTIFICATE

I, R.C. MOON, A REGISTERED LAND SURVEYOR IN THE STATE OF COLORADO, DO HEREBY CERTIFY THAT THIS CONDOMINIUM MAP CONSISTING OF 6 SHEETS WAS PREPARED SUBSEQUENT TO SUBSTANTIAL COMPLETION OF IMPROVEMENTS SHOWN HEREON, AND THAT THE AIRSPACE IS LOCATED AS SHOWN.

DATED THIS 29th DAY OF Nov. A.D. 1982.

R.C. Moon
R.C. MOON L.S. NO 1322



CERTIFICATE OF DEDICATION AND OWNERSHIP

KNOW ALL MEN BY THESE PRESENTS, THAT FOUR SEASONS DEVELOPMENT COMPANY, INC., BEING THE OWNER OF A TRACT OF LAND LOCATED IN A PORTION OF LOTS 2 AND 3 OF BLOCK 7 OF SKI TRAIL SUBDIVISION, FILING NO 1 AS FILED BY PLAT WITH THE CLERK AND RECORDER, ALL OF THE 6TH P.M., ROUTT COUNTY, COLORADO, DID LAY OUT, PLAT AND SUBDIVIDE THE SAME AS "FOUR SEASONS AT STEAMBOAT, PHASE II" BY CONDOMINIUM MAP FILED WITH THE CLERK AND RECORDER OF ROUTT COUNTY IN FILE NO 9215 AND "FOUR SEASONS AT STEAMBOAT CONDOMINIUMS, PHASE II, SUPPLEMENTAL MAP-AIRSPACE UNITS 201-208 BY CONDOMINIUM MAP FILED WITH THE CLERK AND RECORDER OF ROUTT COUNTY IN FILE NO 9245. SUCH MAPS CONTAINS THE DIAGRAMMATIC FLOOR PLANS AND ELEVATIONS OF UNITS 201-208 AND 209-218 AND COMMON ELEMENTS WITHIN THE BUILDINGS CONTAINING SUCH UNITS, SUCH UNITS BEING ONLY A PORTION OF THE CONDOMINIUM UNITS AND COMMON ELEMENTS WITHIN BUILDINGS SHOWN ON SUCH MAPS PURSUANT TO PARAGRAPH 3 OF ARTICLE II OF THE CONDOMINIUM DECLARATION FOR FOUR SEASONS AT STEAMBOAT CONDOMINIUMS, PHASE II. FOUR SEASONS DEVELOPMENT COMPANY, INC., DOES HEREBY SUBMIT THIS SUPPLEMENTAL MAP AS THE DIAGRAMMATIC FLOOR PLANS AND ELEVATIONS OF UNITS 219-230 AND COMMON ELEMENTS WITHIN THE BUILDING CONTAINING SUCH UNITS, AND DOES HEREBY SUBMIT THE SAME TO CONDOMINIUM OWNERSHIP UNDER AND PURSUANT TO THE CONDOMINIUM DECLARATION.

DATED THIS 17th DAY OF DECEMBER A.D. 1982.

FOUR SEASONS DEVELOPMENT COMPANY, INC.,

Lois K. Querido AS VICE PRESIDENT
LOIS K. QUERIDO
Alan Querido AS SECRETARY
ALAN QUERIDO

STATE OF Colorado
COUNTY OF Route } ss

THE FOREGOING CERTIFICATE WAS ACKNOWLEDGED BEFORE ME THIS 17th DAY OF December, A.D. 1982 BY LOIS K. QUERIDO AS VICE PRESIDENT AND ALAN QUERIDO AS SECRETARY OF FOUR SEASONS DEVELOPMENT COMPANY, INC.,

WITNESS MY HAND AND OFFICIAL SEAL
MY COMMISSION EXPIRES JANUARY 15, 1985
MY ADDRESS IS: P.O. Box 942416

Clara A. Brown
NOTARY PUBLIC

STEAMBOAT SPRINGS PLANNING COMMISSION APPROVAL

THE PLANNING COMMISSION OF STEAMBOAT SPRINGS, COLORADO DOES HEREBY AUTHORIZE AND APPROVE THIS PLAT OF THE ABOVE CONDOMINIUM AT A MEETING OF SAID COMMISSION HELD THIS 9th DAY OF December A.D. 1982.

Joseph W. Brown
CHAIRMAN

APPROVAL BY CITY COUNCIL OF STEAMBOAT SPRINGS

THE WITHIN PLAT OF FOUR SEASONS AT STEAMBOAT CONDOMINIUMS, PHASE II, SUPPLEMENTAL MAP - AIRSPACE UNITS 219-230 IS APPROVED FOR FILING THIS 9th DAY OF Dec. A.D. 1982
CITY COUNCIL OF STEAMBOAT SPRINGS
ROUTT COUNTY, COLORADO

Jean Marie CITY CLERK ATTEST J. W. Brown PRESIDENT

ROUTT COUNTY CLERK AND RECORDERS CERTIFICATE

THIS PLAT WAS ACCEPTED FOR FILING IN THE OFFICE OF THE CLERK AND RECORDER OF ROUTT COUNTY COLORADO ON THIS 17th DAY OF DECEMBER A.D. 1982.
BOOK NO. _____ PAGE NO. _____ RECEPTION NO. 323183 FILE NO. 9245
TIME 3:30 P.M.

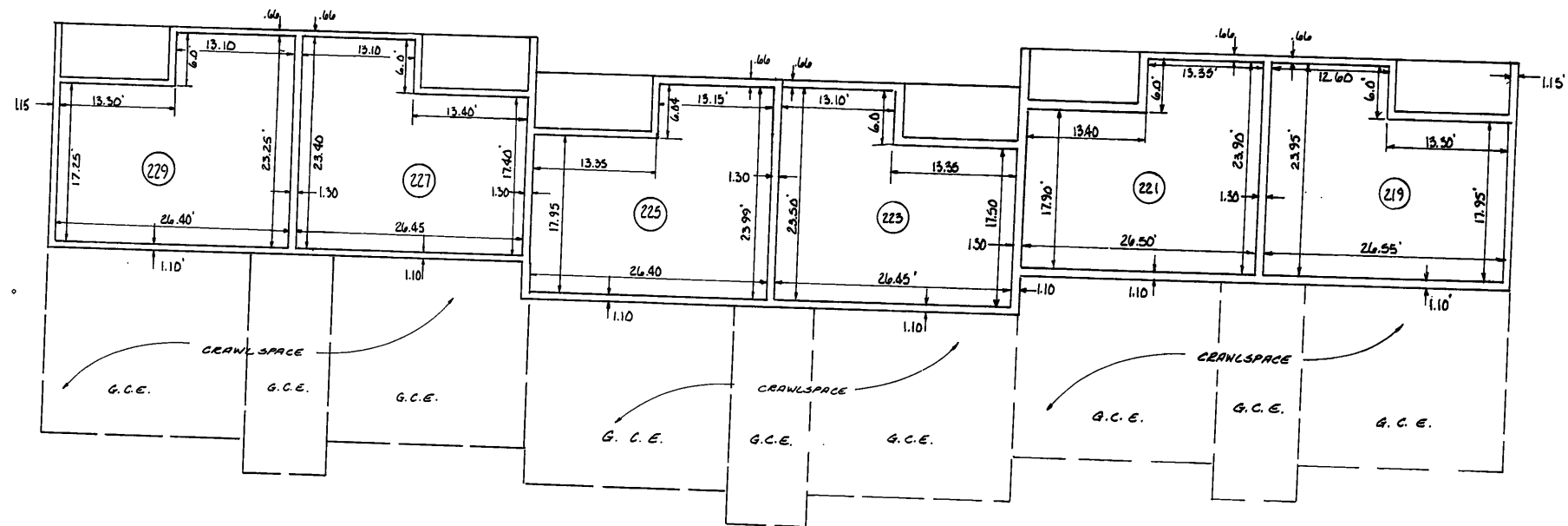
CONDOMINIUM DECLARATIONS ARE RECORDED IN BOOK _____ PAGE _____
ROUTT COUNTY RECORDS.

Lynn D. ...
COUNTY CLERK AND RECORDER

FOUR SEASONS AT STEAMBOAT CONDOMINIUMS, PHASE II

SHEET 2 OF 6

SUPPLEMENTAL MAP— AIRSPACE UNITS 219-230



1ST LEVEL

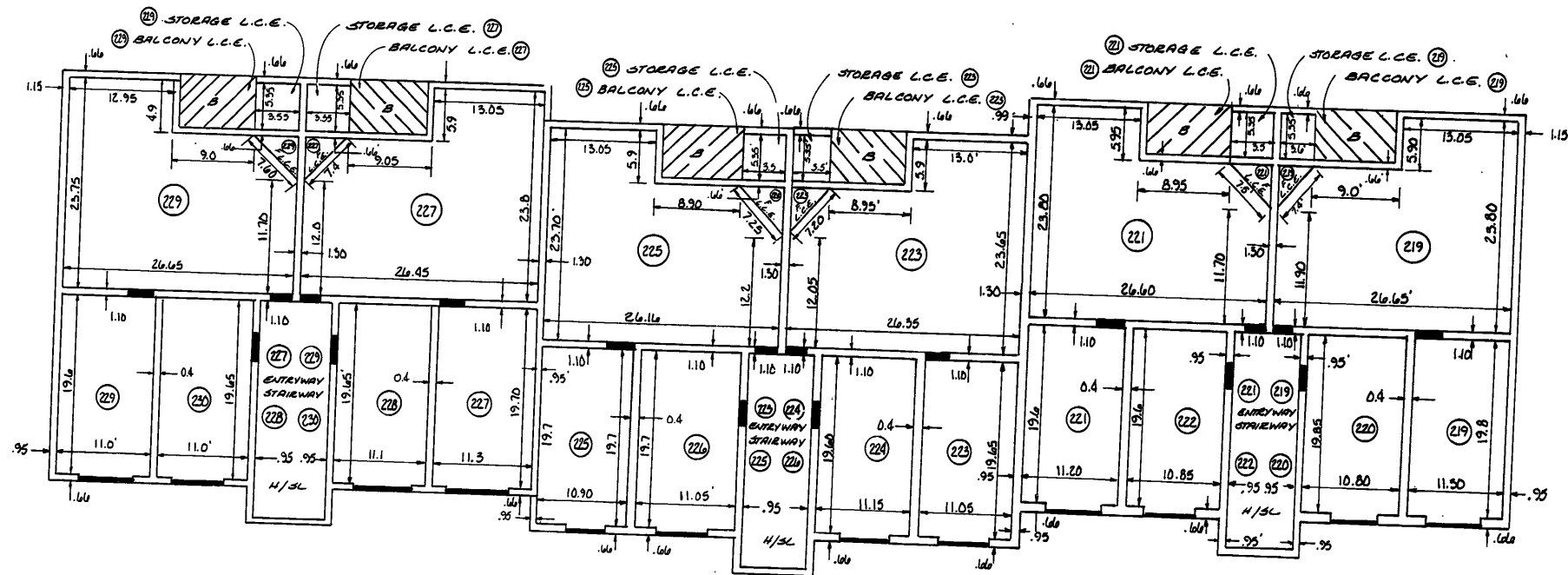


LEGEND	
L.C.E.	= LIMITED COMMON ELEMENT
G.C.E.	= GENERAL COMMON ELEMENT
○	= UNIT DESIGNATION
—	= ENTRANCE
B	= BALCONY
H/SL	= HALLWAY/STAIRWAY LANDING
F	= FLUE/FIREPLACE
G	= GARAGE

FOUR SEASONS AT STEAMBOAT CONDOMINIUMS, PHASE II

SHEET 3 OF 6

SUPPLEMENTAL MAP— AIRSPACE UNITS 219—230



2ND LEVEL

LEGEND

- L.C.E. = LIMITED COMMON ELEMENT
- G.C.E. = GENERAL COMMON ELEMENT
- = UNIT DESIGNATION
- = ENTRANCE
- B = BALCONY
- H/SL = HALLWAY STAIRWAY LANDING
- F = FLUE/FIREPLACE
- G = GARAGE

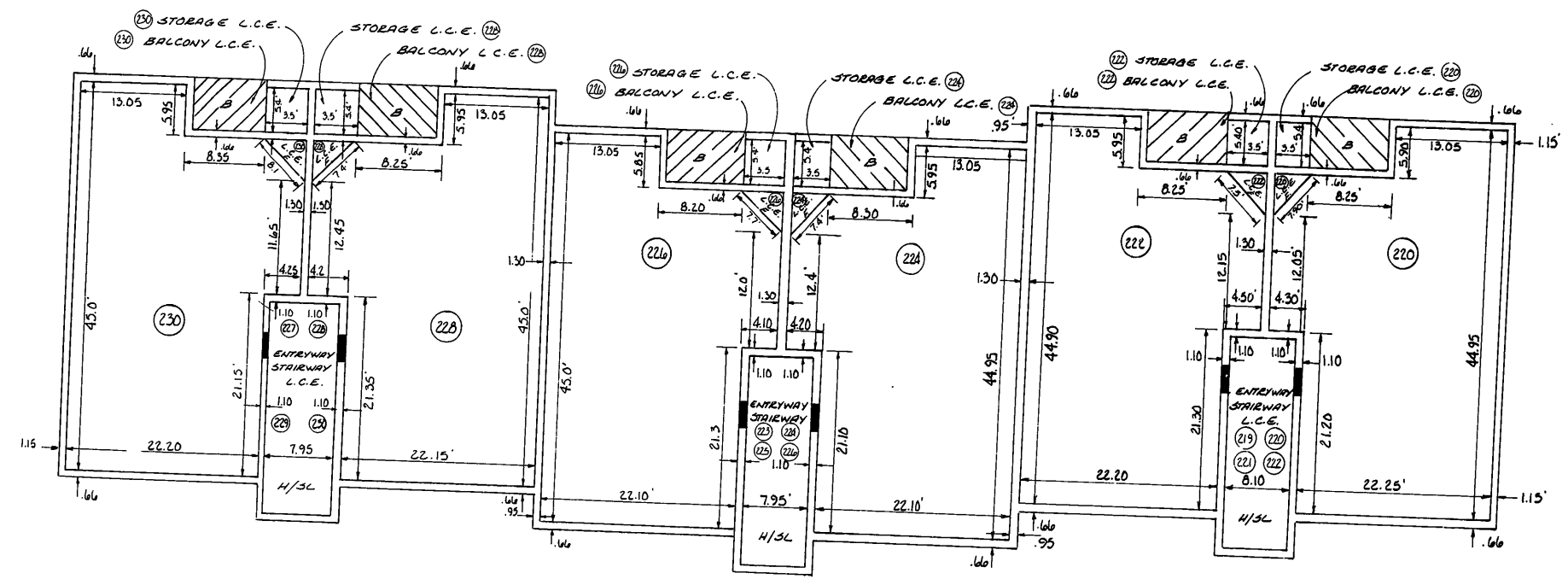


SCALE 1/8" = 1'-0"

FOUR SEASONS AT STEAMBOAT CONDOMINIUMS, PHASE II

SHEET 4 OF 6

SUPPLEMENTAL MAP - AIRSPACE UNITS 219-230



3RD LEVEL



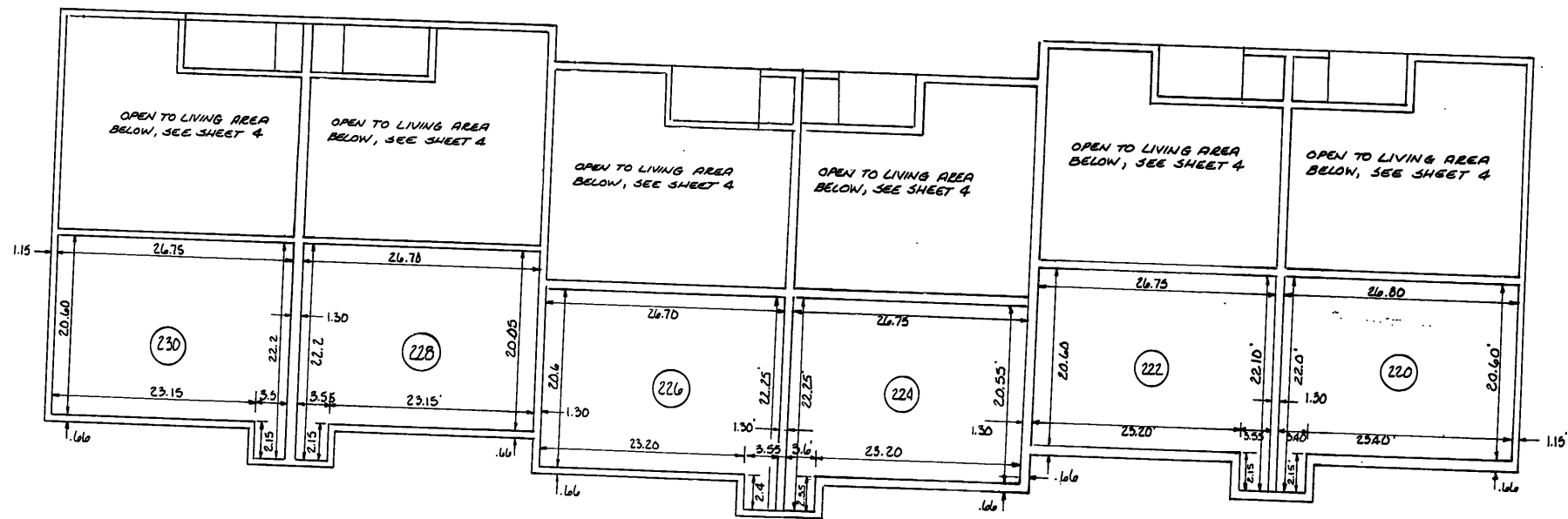
LEGEND	
L.C.E.	= LIMITED COMMON ELEMENT
G.C.E.	= GENERAL COMMON ELEMENT
○	= UNIT DESIGNATION
—	= ENTRANCE
B	= BALCONY
H/SL	= HALLWAY / STAIRWAY LANDING
F	= FLUE / FIREPLACE
G	= GARAGE

22"
17"
11"
8.5"
8.5"
11"
17"
22"

FOUR SEASONS AT STEAMBOAT CONDOMINIUMS, PHASE II

SHEET 5 OF 6

SUPPLEMENTAL MAP - AIRSPACE UNITS 219 - 230



LOFT LEVEL

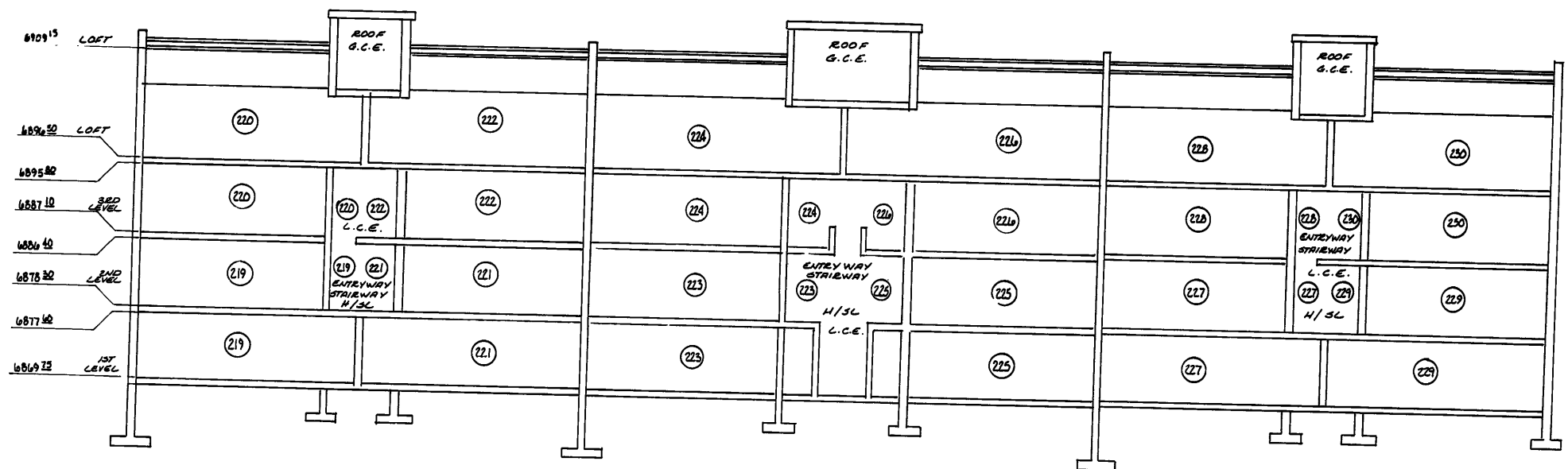


22"
11"
11"
8.5"
8.5"
11"
17"
22"

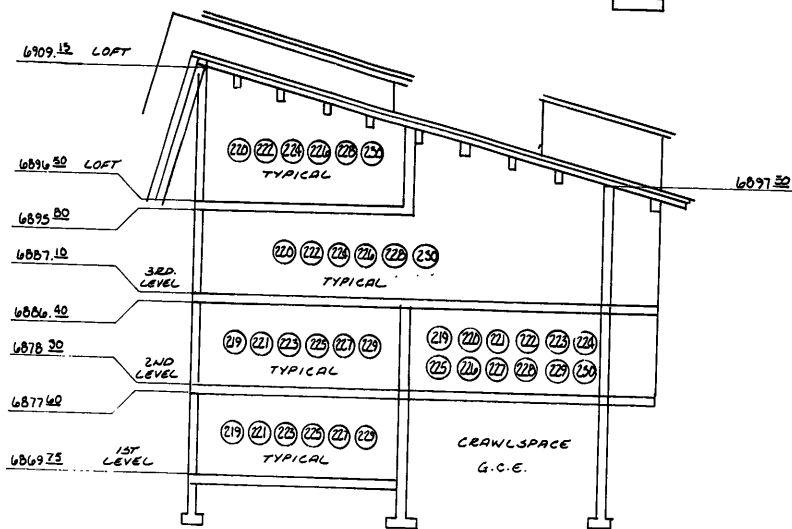
FOUR SEASONS AT STEAMBOAT CONDOMINIUMS, PHASE II

SHEET 6 OF 6

SUPPLEMENTAL MAP—AIRSPACE UNITS 219-230



WEST ELEVATION



SOUTH ELEVATION

ELEVATIONS BASED ON U.S.G.S BENCHMARK
 NO P-28, ELEVATION 6781.6 LINE 101
 COLORADO

LEGEND	
L.C.E.	= LIMITED COMMON ELEMENT
G.C.E.	= GENERAL COMMON ELEMENT
○	= UNIT DESIGNATION
—	= ENTRANCE
B	= BALCONY
H/SL	= HALLWAY/STAIRWAY LANDING
F	= FLUE/FIREPLACE
G	= GARAGE

22"
11"
11"
8.5"
8.5"
11"
17"
22"